



UMB Institute *for* Clinical & Translational Research

September 30, 2020

www.umaryland.edu/ICTR

ICTR-Navigator@umaryland.edu

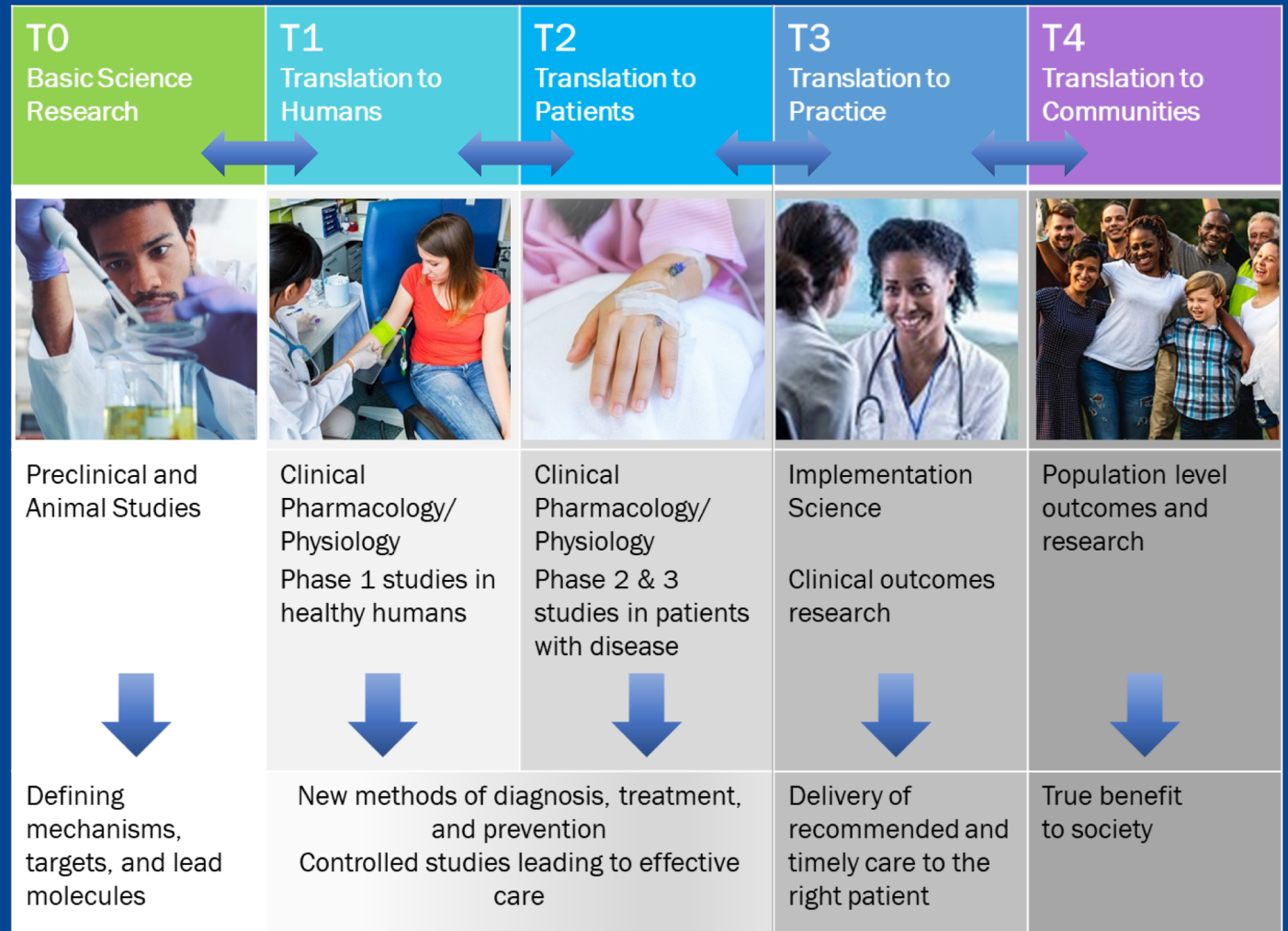
UMB ICTR

1st

Universitywide,
interdisciplinary hub for
clinical translational
research and training,
bringing together the
schools of ...



Translational Science Spectrum (T0-T4)



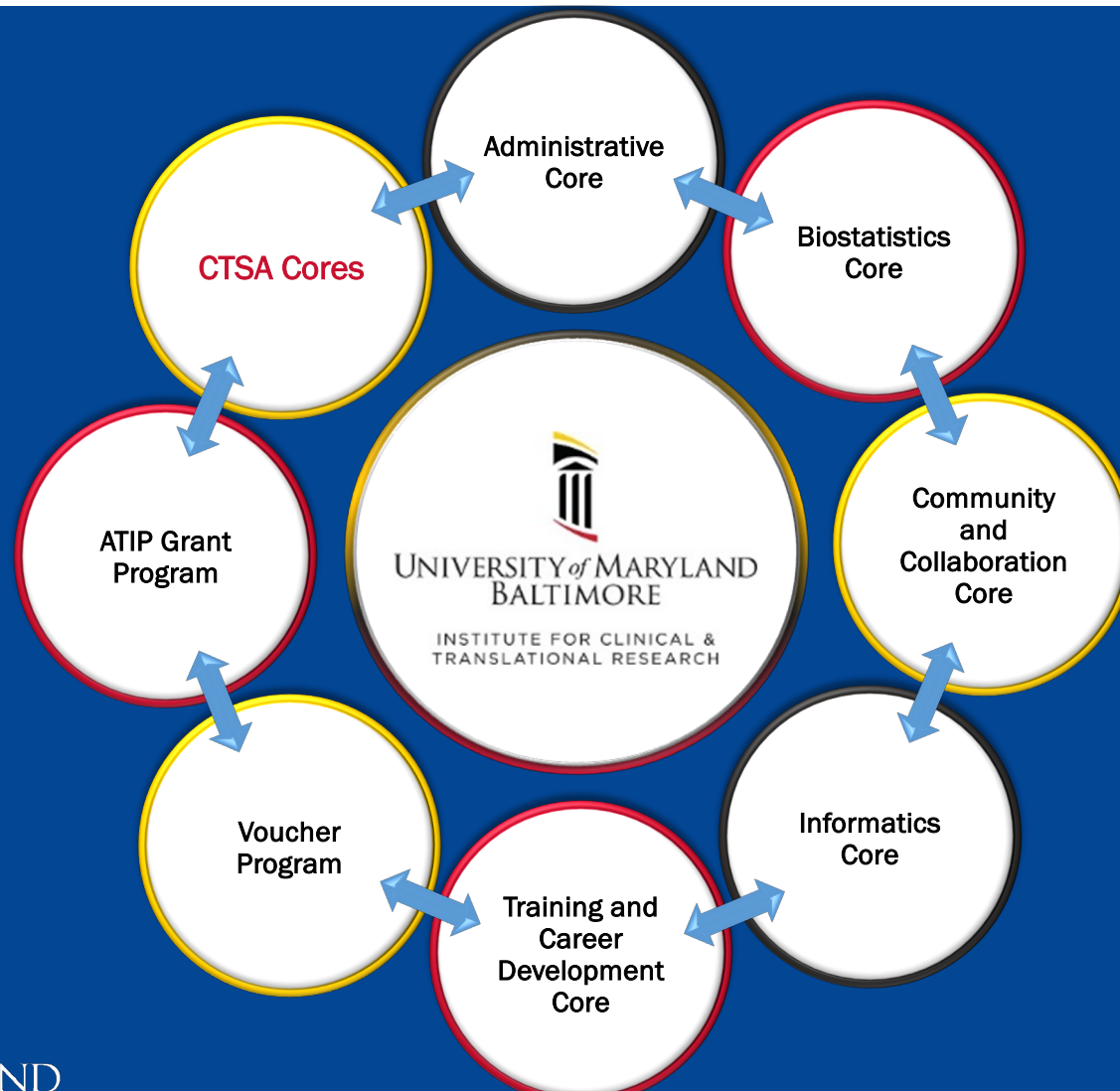
UNIVERSITY of MARYLAND
BALTIMORE

INSTITUTE FOR CLINICAL & TRANSLATIONAL RESEARCH

UMB ICTR is disease agnostic, supporting multiple endeavors to support health across diverse communities and the entire lifespan.



UMB ICTR Cores & Resources



ICTR Biostatistical Core Services

Study Design and Power Analysis

- Feasibility study and sample size based on multistage and adaptive designs; Design and perform randomization; Data analysis plan

Access to Non-EHR Data and Data Use Agreements

- Access to Medicare and Claims Data and assistance with securing memorandums of understanding or data use agreements

Interim Analyses and Data and Safety Monitoring

- Analyses and adaptive designs (including Bayesian designs) consistent with statistical principles for multiple testing and interim analyses

Statistical Analysis

- Beyond major statistical software packages such as SAS, Splus, Stata, StatXact and East, more complex statistical and bioinformatics tool are developed for specific research project (in R or Matlab or SAS)

Statistical bioinformatics

- Analysis of "Big Data" including systems biology, gene regulatory network inference, module biomarker discovery, network biology, data integration, systems pharmacology, personalized medicine, disease-drug-gene association discovery, pattern recognition, image analysis, and data mining

Reports and Publications

- Data analysis is typically summarized in a statistical report in a form appropriate for manuscripts



ICTR Informatics Core Services

TriNetX and Research HARBOR

- Access to clinical EHR data in the UMMS system and soon across UMMS-JHU systems

REDCap

- Allows users to build and manage online surveys and databases quickly and securely

Qualtrics

- Leading enterprise survey company; Easy to create and distribute engaging surveys

Cybersecurity and AI core - UMBC

- Creating a new approach to data

Access to Non-EHR Data

- Claims and administrative data, through collaborations with the Pharmaceutical Research Computing Center and others

Implementation and Dissemination

- Identifying researchers barriers to approaching informatics and data science, and addressing the gap in the translation of evidence into practice, policy and programs.

Digital Health

- Real-time data collection from health related devices



ICTR Community & Collaboration Core Services

- Consultations with **PATIENTS** Program Outreach and Partners to develop appropriate communication strategies for recruitment materials and dissemination
- Creating **focus group**/interpreting results
- Developing participant **instruction/recruitment videos**
- Assembling **advisory board**
- Connecting with **Citizen Scientists**
- Assist with **writing community-engagement section** of your funding proposal



ICTR Community Engagement Initiatives

Provide Research Vehicle for Community Outreach Projects and Research Studies



Additional ICTR Resources

Ask The Navigator

- The ICTR Research Navigator directs investigators to ICTR services and other UMB core services and also advises on the “next steps” in their clinical and translational research projects.

Studios

- The “Studios” program brings together interdisciplinary experts from both **UMB** and **JHU** to provide structured, project-specific feedback for researchers

ResearchMatch



ICTR Funding Opportunities

Two Mechanisms:

- **Voucher “micro grant” Program**

- Up to \$5k in voucher support to enable generation of data on clinical and translational research projects by helping to **defray the costs of other UMB Core Services**
- Applications accepted every 3 months. Next deadline November 2, 2020

- **ATIP Grant Program**

- Up to \$50k in direct cost
- FOA announced in the Fall with application deadline November 13, 2020.



ICTR ATIP Grant Program

The Accelerated Translational Incubator Pilot (ATIP) Grant Program provides starter funds for projects specifically focused on innovative, **translational research** that involve faculty from the UMB Schools, UMBC and collaborative partners

Innovative
Collaboration Pilot
Grant

- 12 months of funding up to **\$50K**

Community-
Engaged Research
Pilot Grant

- 12 months of funding up to **\$50K**

Cybersecurity, AI,
Machine Learning

- 12 months of funding up to **\$50K**



ICTR Core Services and Funding Stats*

Core Service Hours Approved		
Core	Requests	Approved Hours
Biostatistics	173	2819
Community Collaboration	31	861
Drug Discovery & Development*	29	495
Informatics	63	847
Studios	24	139
TOTAL	320	5161

Voucher Program Awards	
Requests	136
Projects Awarded	119
Total Support	\$643,245

ATIP Grant Program			
Round	Apps	Funded	\$\$ Awarded
2020-COVID	41	10	\$296,250
2020	35	17	\$545,000
2019	36	19	\$475,000
2018	25	12	\$375,000
TOTAL	137	58	\$1,691,250

*Dec 2017- Sep 2020 (D3 Core as of May 2019)

Distribution of voucher awards across UMB Cores

Core	Distribution of Vouchers	Amount
Biopolymer/Genomics Facility	5	\$20,050
Bioresco	11	\$29,884
Biosensor	1	\$4,000
Confocal Microscopy	2	\$6,240
Center for Biomolecular Therapeutics (CBT)	1	\$5,000
Center for Translational Research in Imaging (CTRIM)	14	\$82,950
Cytokine Core Lab	4	\$17,434
Electron Microscopy Core Imaging	5	\$20,570
Flow & Mass Cytometry	2	\$7,500
Flow Cytometry Facility	5	\$19,422
General Clinical Research Center (GCRC)	12	\$77,322
Genomics Resource Center (IGS)	18	\$92,859
Investigation Drug Services (IDS)	3	\$19,184
Informatics Resource Center (IGS)	8	\$50,000
NORC	2	\$7,400
Pathology Biorepository (PBSS)	3	\$7,399
PHSR Community Database (SOP)	3	\$14,000
PPC Surgical Services	2	\$13,800
PRC (SOP)	4	\$19,620
Translational Core Lab	17	\$76,135
UMM Bio Repository (Bio Bank)	2	\$9,992
μQUANT Facility (IHV)	1	\$4,675
Vet Services	4	\$14,409
Community Engagement Vouchers	5	\$24,100
TOTAL:	134	\$643,245



Grant Applications supported by ICTR

Funding Agency	Total # of Applications	Direct Costs Requested	Indirect Costs Requested	# Awarded	Direct Costs Awarded	Indirect Costs Awarded	# In Review	Direct Costs Requested	Indirect Costs Requested
Foundation/Nonprofit	19	\$10,944,232	\$1,439,187	9	\$4,152,626	\$2,914,439	5	\$5,751,428	\$867,580
Industry	1	\$150,261	\$31,969				1	\$150,261	\$31,969
NIH	56	\$96,449,471	\$47,078,344	17	\$34,102,528	\$13,955,532	17	\$21,196,484	\$11,341,551
Other Federal Agency	8	\$6,141,227	\$1,228,291	2	\$847,228	\$399,016	2	\$1,880,481	\$0
Grand Total	84	\$113,685,191	\$49,777,791	28	\$39,102,380	\$17,178,987	25	\$28,978,654	\$12,241,100

12/3/2017-9/29/2020



General Clinical Research Center (GCRC)

- The General Clinical Research Center (GCRC) provides University investigators a specialized research environment to conduct clinical research
 - Located in UMMC, South Hospital Building, 10th Floor, C & D Wings – 7,400 sq ft
 - One floor above the Investigational Drug Services (IDS)
 - Inpatient and Outpatient facility; two specimen processing laboratories- Open 24 hours, 7 days a week
 - Phase 1 Unit Expansion- To accommodate Phase I and IIa studies



What Resources Can The GCRC Provide?

- Research Nurses and support staff
- 24-hour nursing care, 7 days a week
- Clinical space
- Education and Training
- Regulatory support and guidance from our Nurse Manager
- EPIC software
- Off site visits



Nursing Staff

- RN's and PCT's with the education, certification and skills to provide quality research participant care. Including but not limited to:
 - Phlebotomy: single or serial PK's
 - Specimen Collection/Processing
 - Investigational Drug Administration
 - Chemotherapy Administration
 - Special Testing/Procedures- GFR, Muscle & Fat Biopsies
 - POC testing: Blood Glucose, Pregnancy Testing, Urinalysis, Hemacue/Hemoccult –CLIA certified
 - Subject Teaching
 - New services to include Chart Reviews and Data Entry



Investigator Support

- Consultation
 - Protocol development and review
- GCRC Advisory Committee (GAC)
 - Provides mentorship and guidance for new investigators
- Provide a safe and precise clinical environment for all forms of clinical research
- For more information, please contact:
 - Meghan Banchero, Administrative Director - mbanchero@som.umaryland.edu
 - Jennifer Marron, Nurse Manager - jmarron@som.umaryland.edu



Clinical & Translational Science Award- CTSA

The CTSA was funded with a start date of May 31st, 2019

Project Period: 5/31/2019 - 04/30/2024

UL1 : Johns Hopkins Institute for Clinical and Translational Research

KL2 : Institutional Career Development Core

TL1 : NRSA Training Core



ICTR/CTSA TL1 Training Program

TL1 Training Award	# of New Slots	Length of Funding
CTSA PRE-doc	1 PRE-doc per year	12 months <i>Funded by CTSA</i>
ICTR PRE-doc	1 PRE-doc per year	12 months <i>Funded by ICTR</i>
CTSA POST-doc	2 POST-docs per year	2 years <i>Funded by CTSA</i>



ICTR/CTSA KL2 Career Development Program

Training Award	# of New Slots	Length of Funding
CTSA KL2	1 Junior Faculty per year	3 years <i>2 years CTSA and 1 year internal funding</i>
ICTR KL2	5 Junior Faculty every 3 years	3 years <i>3 years internal funding</i>



CTSA Brings Additional Cores

Drug Discovery and Development

- Pharmaceutical Manufacturing and Enabled Clinical Trial Formulations
- Pharmacometrics
- Computer-aided Drug Design
- Advanced Protein Characterization for Therapeutic Protein Development

Research Methods Core

- Regulatory Knowledge & Support Advisors

Network Capacity

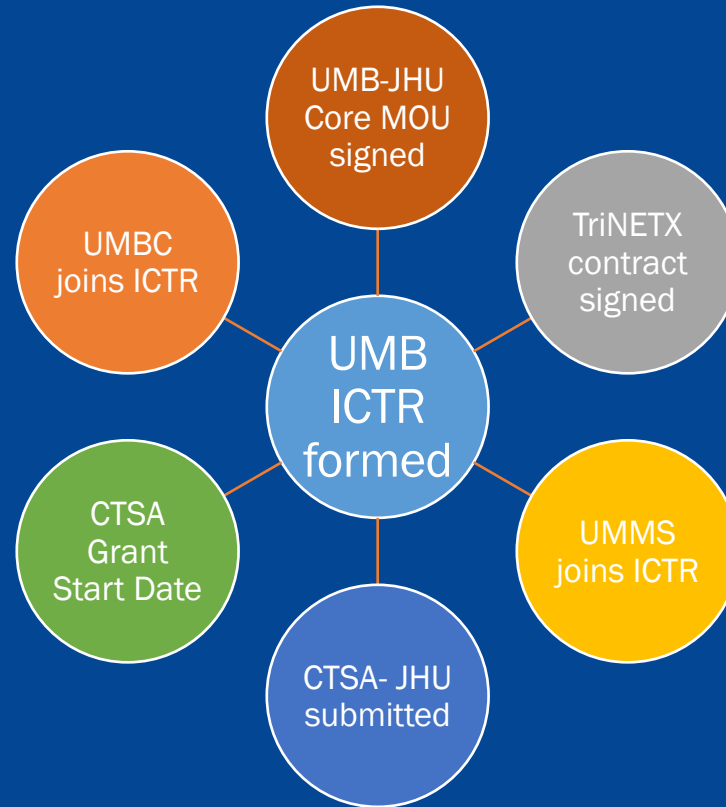
- Liaison to Trial Innovation Centers (TICs)
- Liaison to Recruitment Innovation Centers (RICs)

Hub Research Capacity

- Integrating Special Populations
- Participant and Clinical Interactions



ICTR Ecosystem



In Progress:



Visit UMB ICTR at www.umaryland.edu/ICTR ICTR-Navigator@umaryland.edu

The screenshot shows the UMB ICTR website homepage. At the top left is the University of Maryland Baltimore logo and the text 'UNIVERSITY of MARYLAND BALTIMORE INSTITUTE FOR CLINICAL & TRANSLATIONAL RESEARCH'. To the right are navigation links: 'MY UMB', 'DIRECTORY', 'MAP', 'CALENDAR', and a search bar. A red 'SUPPORT ICTR' button is on the right. Below is a teal navigation bar with links: 'ABOUT UMB ICTR', 'COMMUNITY ENGAGEMENT', 'INVESTIGATOR RESOURCES', 'FUNDING', and 'EDUCATION & TRAINING'. The main content area features a grid of four cards: 1) 'COVID-19 AND UMB ICTR OPERATIONS' with a virus icon; 2) 'JP Courmeya presents: Getting Connected to your Data – A Reproducible Workflow for Data Wrangling' with a photo of JP Courmeya and a 'READ MORE' link; 3) '2021 KL2 MENTORED CAREER DEVELOPMENT & TL1 CLINICAL RESEARCH TRAINING PROGRAM RFAS ANNOUNCED!' with a group photo; 4) 'VISIT OUR LIBRARY OF ICTR-SPONSORED PRESENTATIONS AND LECTURES' with a photo of a presentation. Below the grid is a teal banner for '2021-2022 Accelerated Translational Incubator Pilot (ATIP) Grant Program Funding Opportunity Announcement!!'. At the bottom is a section titled 'What is the UMB Institute for Clinical & Translational Research (ICTR)?' with two columns of text.

UNIVERSITY of MARYLAND
BALTIMORE
INSTITUTE FOR CLINICAL & TRANSLATIONAL RESEARCH

MY UMB DIRECTORY MAP CALENDAR Search

SUPPORT ICTR

ABOUT UMB ICTR COMMUNITY ENGAGEMENT INVESTIGATOR RESOURCES FUNDING EDUCATION & TRAINING

COVID-19 AND UMB
ICTR OPERATIONS

JP Courmeya presents: Getting Connected to your Data – A Reproducible Workflow for Data Wrangling
READ MORE

2021 KL2 MENTORED
CAREER
DEVELOPMENT & TL1
CLINICAL RESEARCH
TRAINING PROGRAM
RFAS ANNOUNCED!

VISIT OUR LIBRARY
OF ICTR-
SPONSORED
PRESENTATIONS
AND LECTURES

2021-2022 Accelerated Translational Incubator Pilot (ATIP) Grant Program Funding Opportunity Announcement!!

What is the UMB Institute for Clinical & Translational Research (ICTR)?

The UMB ICTR is a clinical translational research initiative supported by the UMB campus.

The UMB ICTR is a campuswide clinical translational research initiative supported by the UMB campus. The UMB ICTR provides financial support as well as infrastructure, environment, training, and workforce to invigorate, facilitate, and accelerate clinical translational research to improve patient and community health. This site will highlight ICTR-supported resources as well as other campuswide shared resources and community-engagement activities. If you are unsure of the "next steps" or have problems with the ICTR website, please email [ICTR Research Navigator](mailto:ICTR_Research_Navigator@umaryland.edu) and visit this site often for new and expanding UMB ICTR resources. To learn more about UMB ICTR and the tremendous support from the UMB campus, visit [About UMB ICTR](#). PLEASE NOTE: At this time, UMB ICTR resources and funding are available only to Assistant Professor, Associate Professor, and Professor faculty.